

ZSMARTLED LED GRID DIMMER

TECHNICAL OVERVIEW

The ZSMART is a simple way to install up to three rotary controllers on a single circuit. One 'master' switch and up to two 'slave' controllers can be added to a single circuit. The kit connects direct to twin and earth wiring, for an easy install with minimal disruption on site, and comes with 9 grid adapters including Hager, Euro and Lisse.

The advanced technology used to control the load results in flicker-free dimming of lamps and drivers. This technology also eliminates the need to differentiate between leading and trailing edge lamps. It works with either! All our LED dimmers have built-in thermal and over-load protection, as well as smart settings. It is essential before making connections to check the load against the table to ensure it meets the specification of the dimmer switch. The ZSMART also comes with a Euro module adaptor and a standard size dimmer knob.

SPECIFICATIONS

RANGE	ZSMARTGRID
MODULE SIZE	SINGLE GRID
LAMP TYPE	LED
MAX WATT	120W / VA
MIN WATT	5W / VA
MIN BOX DEPTH	35 mm
2-WAY SWITCHING	YES

MAXIMUM PLATE LOAD RECOMMENDATIONS

COVER PLATE SIZE (WXH)	LED
SINGLE GANG 76MM x 76MM	250W/VA
DOUBLE GANG 137MM x 76MM	640W/VA

SETTING THE MINIMUM LEVEL

SETTING THE MINIMUM LEVEL PRESET :

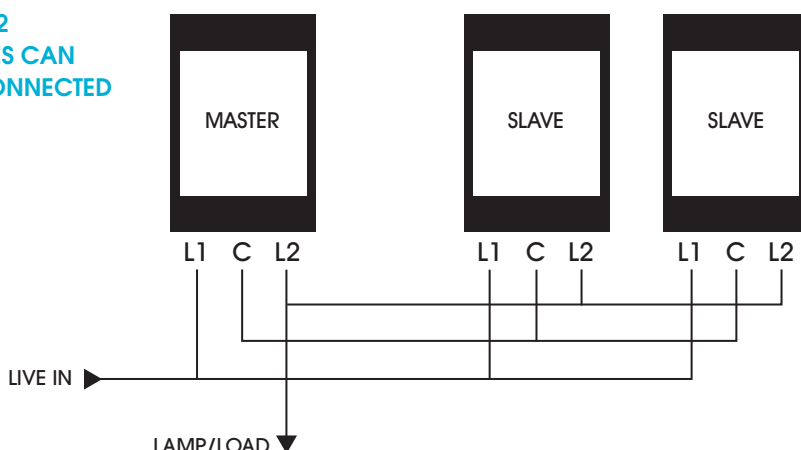
1. Turn on the lights and turn control clockwise to full brightness.
2. Press to turn off.
3. While off, turn control knob fully anti clockwise.
4. Press again to turn on. The lights will flash to indicate that you are now in programming mode.
5. Select the minimum light level required.
6. Wait for 5 seconds. The lights will flash again to indicate the minimum level has been stored.
7. You now have the option to set the start level (see below) or simply wait until the lamps flash once more indicating that normal dimmer operation is resumed.

SETTING THE START LEVEL

After following points 1-6 above, you then have 5 seconds to begin. Select the level needed for your lamps to turn on consistently, wait for another 5 seconds. The lights will flash once more to indicate both levels have been stored and normal dimmer operation is resumed.

WIRING INSTRUCTIONS

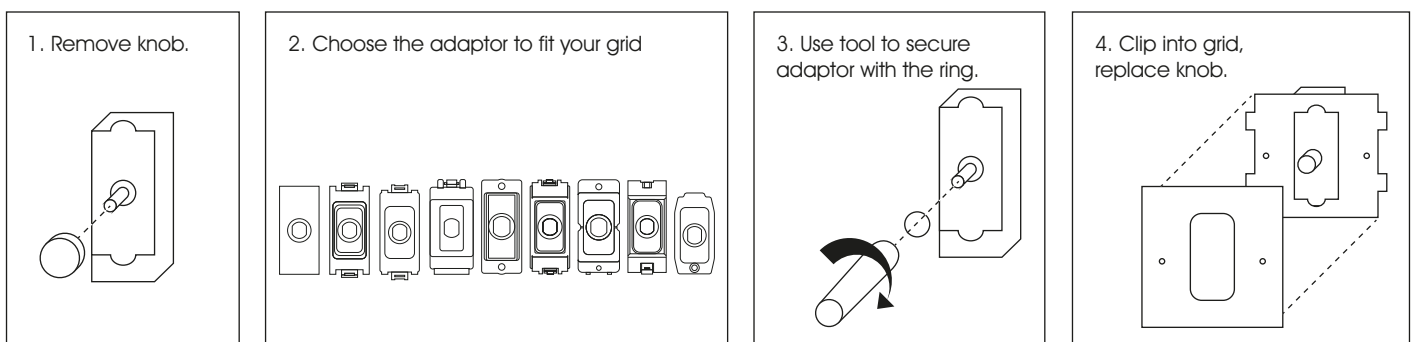
1 OR 2
SLAVES CAN
BE CONNECTED



INSTALLATION MUST BE CARRIED OUT BY A QUALIFIED ELECTRICIAN

- Turn off the mains at distribution board
- Wire device using a suitable rated cable as in wiring diagrams.
- Terminals should be tightened to a maximum of 0.33Nm.
- Check polarity is correct throughout.
- Fit appropriate adaptor as in assembly diagrams.
- Fit device into wall box ensuring cables are not obstructed.
- Secure front plate.
- Product should be recycled at end of life where facilities exist.

DETA SCHNEIDER LISCSE BG WANDSWORTH MK LOGIC HAMILTON HAGER CRABTREE EURO MODULE



CONTACT OUR FRIENDLY TEAM

Unit 1 Chantry Court,
Wrythe Lane,
Carshalton,
Surrey,
SM5 2DG

Call : 0330 058 0010
Fax : 0845 519 5757
sales@zаноcontrols.co.uk

ABOUT ZANO CONTROLS

We are award winning manufacturers of LED dimming solutions and pride ourselves on providing fast, friendly, expert advice. Call us now on 0330 058 0010 for the answer to LED dimming. For our full range of products, technical advice & instructional films or to find your nearest stockists please see our website.

GUARANTEE

For lamp test results and our full terms and conditions please see our website: www.zanocontrols.co.uk.